



INCLUSION





OUR PURPOSE STATEMENT:
**WE EXIST TO CULTIVATE THE POWER OF
GIVING WITHIN OUR COMMUNITY, SUPPORT
LONG-TERM TRANSFORMATION, AND HELP
ENSURE ALL RESIDENTS THRIVE.**



TABLE OF CONTENTS

4) About

5) CEO & Board Chair Message

6) Photo Review

10) Inclusion

12) Impact Investing

14) Growing Roots - A Fundholder Story

16) Assets

17) Fund Types

18) Focus Areas

19) Grantmaking

22) Legacy Society Members

24) Financials

26) Our Team: Staff & Trustees

ABOUT

Welcome to the Midland Area Community Foundation, your local leader in community philanthropy since 1973. We believe anyone can be a philanthropist, facilitating a broad scope of avenues for involvement, and bringing to life the philanthropic goals of foundation members. Most of us cannot donate millions of dollars toward our favorite cause. However, when many people pool their resources to work toward a common goal of building a community where everyone thrives, amazing things are possible. We reflect our donors' and community partners' broad array of interests, including arts, culture, economic development, education, environment, health, human services, neighboring, and recreation.

As money is endowed to the Community Foundation, the gifts grow forever, providing ongoing support to enable the community to prosper and grow in perpetuity.

Your Foundation supports philanthropy in many ways. A few examples are:

Grants – The Midland Area Community Foundation goes beyond making grants that advance charitable activities. The Community Foundation identifies current and emerging community gaps, helps the community prepare for the future, and provides donors the opportunity to leave lasting legacies. Your Foundation granted over \$9 million in 2021 to support a wide array of community programming and nonprofits.

Scholarships – The Community Foundation commits to providing students the opportunity to continue their education beyond high school. Scholarships provide an investment in the community's future, developing talent by helping students achieve their dreams. For example, the Midland Believes Scholarship, since 2017, has provided over \$125,000 to first-generation college students to pursue certification and college degrees.

Projects – Project funds permit Midland Area Community Foundation members to donate for specific purposes. They provide an opportunity for the Community Foundation to offer service and leadership to the community. These funds vary in size and scope. Perhaps, the best example of a project the Community Foundation helped bring to life, with generous support from several community members and local family foundations, is The Tridge, Midland's iconic three-legged bridge, erected in 1981.

Initiatives – With initiatives like Midland Area Cultural Awareness Coalition, Midland Area Violence Prevention Partnership, Public Arts Midland, and community events like River Days, community members can participate in a group, activity, or event that represents their values.

Community members can donate to existing funds like the Community Investment Fund to improve Midland, to specific funds representing their philanthropic goals, or to develop their own fund. The Community Foundation permits donors to direct gifts broadly or narrowly to whatever issues they care about most. Contributions from donors change lives today and in the future. All donations allow individuals to directly engage in philanthropy – giving to those things that matter most to them.

The Community Foundation allows everyday people to invest in opportunities that enrich and improve quality of life, and result in long-term community transformation.



MESSAGE FROM OUR CEO & BOARD CHAIR

Dear Friends,

Thanks for joining with us on our journey over the past year. Community foundations were a unique concept developed over 100 years ago with a motto of “for good, for ever” and to that we have added “for all.” Community foundations reflect the idea that everyday people can join together, invest their resources and transform their community. They were meant to be inclusive, to engage the diverse voices and perspectives of all those living in a geographic area. The Midland Area Community Foundation was founded nearly 50 years ago to achieve these purposes.

Our theme for this year’s annual report is inclusion. Inclusion is a sense of belonging that comes when individuals from different backgrounds are welcomed, valued and equitably given a seat at the table. Maya Angelou said, “in diversity there is beauty and there is strength.”

This year, with the help of your input, we have recrafted our purpose statement to build on our history and reinforce our “why.” We exist to cultivate the power of giving within our community, support long-term transformation, and help ensure all residents thrive. Undergirding this work are values of respect, integrity, compassion and equity.

Fulfilling our purpose statement is an ongoing journey. Our annual report reflects our work to serve donors, cultivating the power of giving. You will read stories of support for long-term transformation through our Cultural Awareness Coalition and support for grassroots efforts like Anti-Racist Midland and their work producing Voices of Black Midland, a digital exhibit featuring a collection of oral histories from current and former residents. Grant investments and leadership efforts over the past year spread across a broad range of areas to ensure all residents thrive.

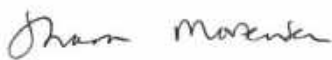
It is a tall order indeed to live into the ideal of community foundations, embracing all community voices and the beauty and strength that brings. Former president Jimmy Carter expressed it this way, “We have become not a melting pot but a beautiful mosaic. Different people, different beliefs, different yearnings, different hopes, different dreams.”

Building an inclusive community means finding a way to allow authentic and empowered participation. We welcome your ideas as we continue our journey together.

In service,

Sharon Mortensen
President & CEO

Dave Marsh
Board Chair





**OUR COMMUNITY'S VISION STATEMENT:
TOGETHER. FORWARD. BOLD.
AN EXCEPTIONAL PLACE WHERE EVERYONE
THRIVES.**





March: Dan Buzzell was awarded the Citizenship Award as part of the annual State of the City Celebration. The Citizenship Award is an award to recognize individuals who are unselfishly committed to making our community a better place by encouraging and helping others to employ civility, respect, and inclusiveness to make a difference.

June: Public Arts Midland, an initiative of the Midland Area Community Foundation, assisted with the operations of the first ever Art Seen Festival. Art Seen Festival is a creative movement celebrating public arts and mural making, in an effort to bring more vibrancy to our community. Public Arts Midland believes art inspires us and propels us forward while bringing voice to diverse experiences and people.





August: The Midland Area River Days Festival, an initiative of the Midland Area Community Foundation, brought music and enriching entertainment back to Downtown Midland. River Days is an inclusive festival, providing fun and local resources to the Midland community.

September: Midland Neighboring Week, an effort of the Midland Area Cultural Awareness Coalition, was celebrated between September 27 and October 3. Neighboring Week is a weeklong awareness campaign for inclusivity and engages people and organizations across multiple sectors within the community.



October: Representatives from the Midland Business Alliance and leaders in our community gathered at the site of the new M20 Bridge Mural to officially cut the ribbon. This project was commissioned by the Midland Area Community Foundation and supported by expertise from Public Arts Midland.

October: Ripple Effect, Midland Area Community Foundation's celebration of philanthropy, took place at the Nicholson-Guenther Band Shell.





November: The We Hear You Task Force announced the findings of a comprehensive diversity, equity and inclusion assessment, focusing on data and needs related to six key areas: demographics, housing, socioeconomics, healthcare, policing & criminal justice, and governmental structure & representation. The Community Foundation provided funding and support for the survey.

December: Midland Area Community Foundation took part in the annual Senior Christmas Dinners program. The Christmas Dinner program serves over 1,000 free meals to local seniors. Senior Christmas Dinners has been an annual program for the last 45+ years.





INCLUSION

The Midland Area Community Foundation is taking a multi-pronged approach to addressing our community's challenges in the areas of diversity, equity, and inclusion by focusing on the individual, organizational, and community levels.

In 2021, each of the Community Foundation's staff members engaged in a learning journey through participation in the Intercultural Development Inventory. The Inventory includes individualized assessments, ongoing trainings, and the establishment of work plans for further learning and follow-up development. This process is being led by Alfredo Hernandez, Racial Equity Officer for the Michigan Department of Civil Rights.

"We understand that real, impactful community change starts from within," said Alysia Christy, Director of Community Impact for the Midland Area Community Foundation. "As we take our journey, we can apply learned principles to our organizational work practice."

The Midland Area Cultural Awareness Coalition, an initiative of the Community Foundation, has continued to work towards its vision of building inclusion across Midland County. Members of the Coalition guide and lay the groundwork for the committee in the core values of inclusion, respect, empathy, authenticity, honesty, curiosity, openness, justice, and knowledge through recognizing and respecting differences, giving value and voice to those that have been marginalized, and acting against discrimination and injustice.

The Coalition took a collaborative approach to community change through Neighboring Week and the Visibility Project. Neighboring Week, inspired by National Good Neighbor Day, is a weeklong awareness campaign for inclusivity that engages people and organizations across multiple sectors within the community. The Visibility Project is a community collaborative aimed at bringing awareness to unseen and unheard populations through a podcast series.

"There's a lot of work to be done in our community, but it's important to recognize that beautiful diversity already exists in our community," said Christy. "Diversity happens in many forms – racial, socioeconomic status, sexual orientation, gender, etc. Neighboring Week and The Visibility Project are both great awareness pieces that help tell and celebrate the story of those around us."

The Community Foundation understands that the best outcomes happen when we collaborate with the community and our partners to create dialogue, advocate for change, and act on important matters that impact the region. Two collaborative projects the Community Foundation had a role in are the Voices of Black Midland, a project by Anti-Racist Midland, and the We Hear You Task Force, an initiative featuring community leaders from various sectors.

Voices of Black Midland is a comprehensive collection of Black Midland's history. The living, digital exhibit features a collection of oral histories from current and former residents of Midland from various generations, careers, socioeconomic backgrounds, and periods in Midland's history. While the Community Foundation supported this project financially, project leadership came from Anti-Racist Midland with additional support from the Midland County Historical Society, Midland Center for the Arts, Cultural Awareness Coalition and the Midland Daily News. The online exhibition can be accessed at voicesofblackmidland.com.



Neighboring Week was celebrated throughout Midland in varying forms. Public Arts Midland and Midland Area Cultural Awareness Coalition collaborated to create a series of mini-murals (left and right).

The Community Foundation held a networking event to meet and greet others in the Center City District and beyond (top right).



The We Hear You Task Force convened following the killing of George Floyd by Minneapolis Police in May of 2020, prompting City of Midland Mayor Maureen Donker, City Council Member Diane Brown Wilhelm, and Chief of Police Nicole Ford to issue a public statement condemning this incident. The goal of this initiative was to formulate an action plan to work toward more significant equity, inclusion, and justice in our community. This project received the full support of both the Midland City Council and the Midland County Board of Commissioners.

To better understand the community's needs, the Task Force worked with Saginaw Valley State University, who conducted a Diversity, Equity, and Inclusion Community Assessment. The assessment focused on data and needs related to six key areas: demographics, housing, socioeconomic, healthcare, policing & criminal justice, and governmental structure & representation. As a member of the We Hear You Task Force, the Community Foundation provided funding and support for the assessment.

"It's a priority of the Community Foundation to support our community's vision of becoming a place where everyone thrives," said Sharon Mortensen, President and CEO of the Midland Area Community Foundation. "This study lays the groundwork for local residents, leaders, and organizations to take steps to ensure greater equity and inclusion."

The assessment outcomes were comprised of publicly available data (CDC, Census, FBI, etc.) and a comprehensive community survey. The results of the We Hear You assessment were shared with the community on November 18, 2021, at the Hach Student Center on the campus of Northwood University.

The data-driven presentation outlined the DEI assessment, findings, and actions in all six key demographics and detailed next steps. To view the Diversity, Equity, and Inclusion Report, visit the Midland County Dashboard website at midlandcountydashboards.org.

For more information about the Midland Area Community Foundation or the Midland Area Cultural Awareness Coalition, visit midlandfoundation.org.





IMPACT INVESTING

Since 1973, the Midland Area Community Foundation has approached philanthropy in simple and meaningful ways. We invest our assets and distribute a portion of the returns to local nonprofits doing transformational work. As a community foundation, we often promote our grantmaking work. But underlying our ability to make grants, we must wisely invest the funds entrusted to us to allow foundation assets to grow.

Working with our board, the Community Foundation began to look at ways to put our assets to use locally.

In 2016, we announced our decision to invest a small percentage of our assets (2% of total assets, or approximately \$2.6 million) in projects we call “impact investments”, which benefit our community directly. These are investments made to local for-profit companies, nonprofit organizations, and projects with the intention to generate measurable social or environmental impact alongside a financial return.

“Through impact investing, we can deploy capital locally instead of making investments in global capital markets,” said Kyle Fahrner, Chief Financial Officer of Midland Area Community Foundation. “When communities need more resources, many community foundations seek different ways to have their fund investments put to work to accomplish their mission and financial goals.”

We believe through careful impact investing, a portion of capital from the Community Foundation can be a catalyst that attracts more commercial and public dollars, leading to more innovative and effective projects and enterprises in our community. Impact investing is one tool to help provide long-term transformation to our community.

Midland Area Community Foundation’s initial impact investment was a \$300,000 investment in the Fairfield Inn located in Downtown Midland in 2018. In 2021, the Community Foundation made another impact investment to support Early Explorers Child Care & Learning Center whose mission is to provide quality, safe, and affordable STEM based childcare for Midland families.

In 2020, the Midland Area Community Foundation’s Board of Trustees approved placing an additional \$250,000 in the Impact Investing Fund. Small businesses impacted by COVID-19 could apply for loans up to \$5,000 to assist with COVID-19 relief. The Community Foundation worked closely with the Midland Business Alliance on the loan review and approval process. Twenty-nine loans were distributed with a 0% interest rate to small businesses in need.

**WE ARE HERE TO CHAMPION CAUSES OUR DONORS
AND SUPPORTERS CARE ABOUT AND SUPPORT OUR
COMMUNITY BY BEING A TRUSTED STEWARD OF
FUNDS. YOUR COMMUNITY FOUNDATION WILL
CONTINUE TO ENRICH AND IMPROVE THE QUALITY
OF LIFE IN MIDLAND COUNTY — FOR GOOD, FOR
EVER, FOR ALL.**

If you would like more information regarding impact investing, please e-mail Kyle Fahrner at kfahrner@midlandfoundation.org. An Impact Investing Committee at the Midland Area Community Foundation reviews proposals that meet the program's criteria. To explore frequently asked questions about impact investing, please visit midlandfoundation.org/initiative/impactinvesting.





GROWING ROOTS AND GROWING IMPACT

Devoted parents with a passion for education and public health, Sasha and Heather Savage's philanthropic goals are strongly influenced by their desire to help create a healthier society for current and future generations.

"When I first met Sasha, I told him I only wanted enough to get by. If we could give back, I wanted to make sure we were involved in our community and helping those around us," said Heather.

Sasha, a native of Kalamazoo, and Heather, originally from the Bay Area of California, had no idea their philanthropic journey would land them in Midland, let alone as donor-advised fundholders with the Midland Area Community Foundation.

"When I met Sharon (Mortensen) while serving on the Midland Medical Center board at MyMichigan, I could tell she was a woman of deep character and high integrity. I was able to learn more about the Community Foundation through that relationship," said Sasha. "After learning more about the Community Foundation, we realized a donor-advised fund would be a great fit."

Graduates of Brigham Young University and parents of eight children, Sasha and Heather, understand the importance of education. Sasha serves as a doctor at MyMichigan Health. Heather is a teacher at the Chippewa Cooperative Preschool and will soon begin a new role as Lead Teacher. Seeing correlations between public health and early childhood education, the Savages opened a donor-advised fund to provide grants to organizations and projects that resonate with their passions.

"The first five years of life are so formative. Numerous studies point to the value of early childhood education," said Sasha. "Amongst those who can attend preschool, there are lower levels of depression, higher levels of secondary education completion, and overall higher levels of wellness."

Donor-advised funds are a personal and efficient approach to giving and allows donors to be actively involved in grantmaking. These funds are often called a "charitable checking account." Donors can support causes they care about while growing their tax-free charitable investment.

To learn how to join the Savages in partnering with the Midland Area Community Foundation to reach your philanthropic goals, visit MidlandFoundation.org or call the Community Foundation directly at 989-839-9661.

“WHEN I FIRST MET SASHA, I TOLD HIM I ONLY WANTED ENOUGH TO GET BY. IF WE COULD GIVE BACK, I WANTED TO MAKE SURE WE WERE INVOLVED IN OUR COMMUNITY AND HELPING THOSE AROUND US.” - HEATHER SAVAGE



ASSETS

The Community Foundation has over \$135 million in assets, enabling us to give now, and in the future. Over 700 funds are represented in the dollar amounts below. Many of the funds are endowed and all have the purpose of helping with causes our donors care about.

Anyone can be a philanthropist. Whether the gift is large or small, gifts to Midland Area Community Foundation go toward helping Midland thrive.

\$135,269,471

TOTAL ASSETS

\$14,407,853

AGENCY FUNDS

\$6,600,464

FIELD-OF-INTEREST FUNDS

\$35,561,524

**COMMUNITY INVESTMENT
FUNDS**

\$10,702

**GIVING CIRCLE
FUNDS**

\$31,391,026

DESIGNATED FUNDS

\$6,511,678

PROJECT FUNDS

\$15,017,990

DONOR-ADVISED FUNDS

\$25,228,234

SCHOLARSHIP FUNDS

OUR FUNDS

AGENCY FUNDS

Endowing a nonprofit organization

A simple and efficient way to build an endowment and help create sustainability for local nonprofits.

COMMUNITY INVESTMENT FUNDS

Meeting ever-changing needs

Help address a broad range of local needs, including future needs that often cannot be anticipated today.

DESIGNATED FUNDS

Helping local organizations sustain and grow

Make a lasting impact for a particular nonprofit organization - a senior center, museum, or other organization.

DONOR-ADVISED FUNDS

A personal approach to giving

Be actively involved in grantmaking with a simple, powerful personal approach to giving that is oftentimes called a "charitable checking account."

FIELD-OF-INTEREST FUNDS

Connecting personal values to high-impact opportunities

Target specific areas of community investment such as arts, recreation, youth development, or other initiatives you are passionate about.

GIVING CIRCLE FUNDS

Giving with a group

Combine your contributions with other like-minded individuals so that everyone can collectively make a lasting difference on the causes they value. We'll manage the details while your group focuses on making an impact.

PROJECT FUNDS

Focus on fundraising, not fund management

The ideal vehicle for a short-term community project. We'll manage all accounting, tax receipts, and donor communication so you can focus on fundraising.

SCHOLARSHIP FUNDS

Investing in deserving students

Develop talent by helping hardworking area students achieve their lifelong dreams.

All these types of funds can be set up in a way to memorialize a loved one or honor a family/individual.



Scholarship recipients were able to meet with scholarship fundholders at an event held at Northwood University in June.



WHAT DRIVES THE WORK WE DO?

By working with Midland's Community Success Panel, we outlined four major focus areas for Midland Area Community Foundation. We believe that to work towards a more vibrant, thriving community, our efforts should focus on these broad areas.

Building our livelihood means focusing on economic development and infrastructure. **Developing our talent** means focusing on education and the development and engagement of our youth. **Caring for our people** means focusing on health, human services, poverty, housing, and public safety. **Enriching our community** means focusing on arts, culture, entertainment, recreation, diversity, and the environment.

We believe that moving forward together with our donors and the community, we can help to transform our community as we focus on these areas. Together, we're enriching and improving our quality of life.

BUILDING OUR LIVELIHOOD

Midland County creates and sustains competitive advantages for existing and future businesses. We are well-connected and invest in our physical and technological infrastructure.

CARING FOR OUR PEOPLE

The Midland community provides a coordinated and comprehensive system of supportive health and human services so that all may thrive. We encourage self-sufficiency and accept all individual responsibilities to collaborate to create the safest community in the country.



ENRICHING OUR COMMUNITY

Midland County is a vibrant hub of arts, culture, entertainment, and recreational opportunities. We are committed to equality and inclusion, and we welcome, embrace and accept all people. We are a sustainable community that values and protects its natural resources.

DEVELOPING OUR TALENT

Midland County offers high quality education and learning opportunities throughout life. Our community nurtures a skilled workforce and places high value on post-secondary learning. We provide opportunities for children and youth to realize their hopes and dreams.

GRANTMAKING

Your Foundation holds over 700 individual funds, each with a different purpose, impacting our community through grants and/or scholarships. Most funds were established by individuals partnering with Midland Area Community Foundation to impact our community positively.

Grant totals reflect all funds held at the Community Foundation. Grants on the following pages represent Midland Area Community Foundation's competitive grants. Money for these grants comes from Community Investment and Foundation Directed Funds held at the Community Foundation. Also, competitive grants are awarded through the Kellogg Youth Fund, utilized at the direction of the Midland Area Youth Action Council.

\$9,537,280

OUR GRANTMAKING

\$2,027,114

**DEVELOPING OUR
TALENT**

\$4,378,879

**CARING FOR OUR
PEOPLE**

\$2,054,395

**ENRICHING OUR
COMMUNITY**

\$1,076,892

**BUILDING OUR
LIVELIHOOD**



Ayiteh Sowah from Bridge the Gap, spoke alongside Police Chief Nicole Ford and Sheriff Myron Green at Midland Area Community Foundation's Ripple Effect celebration. Bridge the Gap received a \$21,000 grant to fund their programming in 2021. Bridge the Gap's mission is to build positive relationships between law enforcement and the community, by mending the relationship through fun, safe activities on neutral grounds.

ALL COMPETITIVE GRANTS 2021



DEVELOPING OUR TALENT

Northeast Community Action Agency - \$33,955
Midland M20 Head Start playground remodel



BUILDING OUR LIVELIHOOD

Hope Township - \$10,000
Woodside Park renovations & security upgrades

Meridian Public Schools - \$100,000
Outdoor facility project

The Legacy Center for Community Success - \$10,000*
Profiles of Student Life: Attitudes & Behavior Study



Cleveland Manor, Inc. received a \$100,000 grant for apartment renovations in 2021.



CARING FOR OUR PEOPLE

2-1-1 Northeast Michigan - \$7,500
Additional staff support for increased call volume due to Covid-19

Alzheimer's Disease & Related Disorders Association - \$35,000
Midland County Dementia Care & Support Program

ARC of Midland - \$187.24
Hardshell helmet purchase

Bridge the Gap - \$21,000
Police Academy & Feed the City program funding

City of Midland (Washington Woods) - \$40,000
East side chiller project

Cleveland Manor, Inc. - \$100,000
Apartment renovations

Faith United Methodist Church - \$25,400
Generator project

Hidden Harvest - \$25,000
Program expansion through the acquisition of a refrigerated food truck

King's Daughters & Sons of Midland, Inc. - \$10,000
Support for Community Christmas Closet

Labor of Love MidMichigan, Inc. - \$12,000
Holistic care for underserved pregnant women in Midland

Mid Michigan Community Fire Board - \$12,033
Fire hose and nozzle replacements

Midland County Habitat for Humanity - \$10,000*
Energy Efficiency Grant - boiler replacement

Midland Police Department - \$65,146
Midland Police Technology Enhancement Project - 3D scanner

MyMichigan Health Foundation - \$65,000
Comprehensive Cancer Center

North/West Lower Michigan Synod ELCA - \$10,000
Camp Noah - disaster recovery for children (Midland & Gladwin Counties)

Phoenix Community Farm - \$10,000*
Outdoor education space expansion in Midland County

Project 111 - \$40,000
Project 111 Driving School support

Safe & Sound Child Advocacy Center - \$10,000*
Counseling program

The Ronald McDonald House of Western Michigan, Inc. - \$7,500*
Operational expenses

West Midland Family Center - \$40,000
Box truck - community access to food

West Midland Family Center - \$10,000*
Box truck - community access to food (2)

The Midland Center for the Arts received a grant for \$100,000 to accommodate for a new schematic design due to catastrophic flooding in 2020.



ENRICHING OUR COMMUNITY

Chippewa Nature Center, Inc. - \$4,500*
Youth Nature Education and STEM equipment package

Chippewa Watershed Conservancy, Inc. - \$10,000
Szok Preserve - river access site

County of Midland - \$100,000
Pere Marquette Rail Trail revitalization - Phase 1

Creative Spirit Center - \$10,000*
Energy Efficiency Grant - HVAC system

Dahlia Hill Society of Midland - \$6,600
Website development for the Dahlia Hill Society

Greater Midland Community Centers, Inc. - \$10,000*
Energy Efficiency Grant - Tennis Center lighting

Greater Midland Community Centers, Inc. - \$100,000
Greater Together Capital Campaign

Humane Society of Midland County - \$10,000*
Energy Efficiency Grant - HVAC & new lighting

Michigan Crossroads Council Inc., BSA - \$10,000*
Building Coleman - capacity for scouting

Mid Michigan Brass Band - \$32,000
Community music group - new percussion equipment

Midland Center for the Arts, Inc. - \$25,000
Exhibit & programming - "From Inside Out: Little Microbes & Their Big Impact"

Midland Center for the Arts, Inc. - \$100,000
Midland Center schematic design request

Midland County Educational Service Agency - \$43,235
Pediatric Center for Rehabilitation & Behavioral Health - adapted playground

Midland County Road Commission - \$125,000
Bailey Bridge at Smith's Crossing - rehabilitation

Midland Radio Control Modelers Club, Inc. - \$15,000
Runway reconstruction project

Saginaw Valley State University - \$10,000
Community Read: Great Lakes Bay Region

*Grants made during the Energy Efficiency Grant Cycle
*Youth Action Council Grants



LEGACY SOCIETY

Members of the Legacy Society have chosen to include the Community Foundation in their estate plans. This means that after they pass, assets such as their IRA or real estate will be gifted to the Community Foundation. The goal of the Legacy Society is to recognize and honor members for their foresight, dedication, and philanthropic spirit.

Gene Anderson	Donald and Marilyn J. Findlay	Marty and Jan McGuire
Mary E. Armstrong *	Elloweese Denise Freer	Bernie Meister
Dorothy Van Arsdale *	Michael R. and Cassie J. Gambrell	Celia G. Mendoza
Charles R. Ashcraft*	Kathleen* and Howard* Garrett	Ann H. Moore*
Carolyn Ayre *	Catherine Gerace*	Terry & Carleen Moore
Richard Ayre*	William and Karen Gibson	Robert and Sharon Mortensen
Gwendolyn M. Bagley*	W. Herman Gieseler*	Sylvia Myers
George* R. and Dorothy* J. Baker	Mark and Alison Goethe	Mary Eileen O'Brien *
Barbara* and Wayne* E. Barrett	Roger* and Virginia Gohrband	Howard Ode *
Orrin* H. and Eleanor* L. Barrett	James* and Priscilla* Gorman	Edward and Indira Oskvarek
Rebecca S. Bastuk	L. Scott Govitz	Barbara B. Panian *
Karl W. and Sandra R. Bauman	Julius Grosberg*	Ruth Peele*
Robert Beacom	Reigh* and June* Gunderson	Faye E. Prescott *
Harry J. Beamish*	Linda Haight	Mildred* and Mark* Sheldon Putnam
Imogene Beattie*	Dr. Kuno* and Lois* Hammerberg	Alex A. and Ashley B. Rapanos
Marian Bebb*	Donal D. and *Sally E. Hammond	John S. Reder*
Linda and Neil Bell	Francine Heinze*	Robert* B. and Jean* W. Reinhart
Sharon Brady	Robert L*. and Cheryl K. Johnson	Ruth M. Rice*
Stuart* S. and Katherine* Branson	Sharon Kalina	Joseph E.* and Joan H. Rogers
David and Colleen Bremer	Kevin B. and Jennifer A. Kendrick	Hugo L. Schaefer, Jr.*
William* A. and Sylvia* B. Bridge	Kennylou Wold Keskey *	Mary E. Smith*
Veronica Cermak*	Charles Kline*	Sandra Steele
Fern Christenson*	Dennis K. and Jacqueline Klipa	Marvin M. Stein*
Daniel J. and Linda Cline	Sharon L. Sims-Koffman	Betty L. Summerville
Donna Comfort*	Jeff Kroeger	Joann C. and Glen Taylor
Helen* M. and Floyd* Copus	Douglas E. Lake*	Terrance and Deborah Temperly
Ronald F. Cornier	Linda and Lester Lamparski	Mary R. Thomas *
Eleanor Currie*	Sue Haske Lane*	Frederic C. Tuttle *
Ruth E. Dangler*	Hal Lange	Mary M. Wilson
Janet Darby and Nicholas Darby	Paul E. and Charlotte Larsen	Lois M. Yack*
Matt and Kathleen Davis	James R. Malek	David and Terri Zimmerman
Greg and Robyn Dorrien	Lawrence* and Eleanor* Matthews	George and Gladys Zubulake
Marion Dudd *	Gerald* T. and Charlotte B. Maxson	*DECEASED
Catherine Elliott*	Michael and Linda McComb	

Dr. Linneaus Dorman was named the Philanthropist of the Year at Midland Area Community Foundation's annual Ripple Effect celebration.



Planned giving does not require a large income or vast estate, only a thoughtful intention to make a difference in your community. To learn more about the legacy society, contact us at 989-839-9661.

**GIVE LOCAL
MIDLAND™**

**\$445,000+ RAISED FOR LOCAL
NONPROFIT ENDOWMENT FUNDS IN 2021**

OUR FINANCIALS

ASSETS	2021	2020
Cash and cash equivalents	\$2,964,560	\$3,217,725
Investments	\$130,637,072	\$116,446,208
Prepaid expenses and other assets	\$476,235	\$330,056
Parks and improvements	\$668,647	\$668,647
Office facility and equipment, net	\$522,957	\$540,068
Total assets	\$135,269,471	\$121,202,704

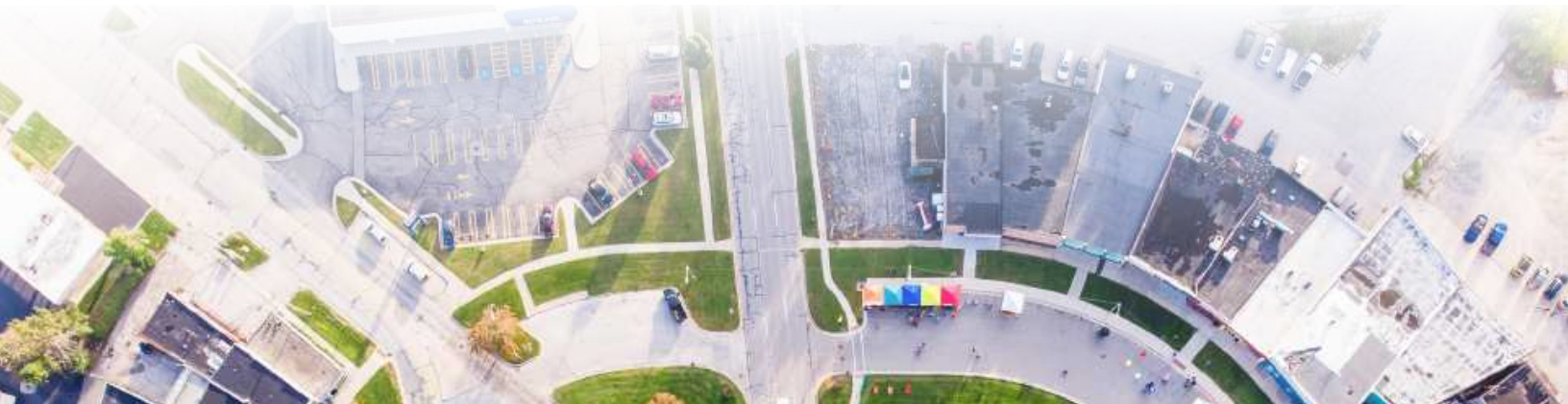
LIABILITIES AND NET ASSETS

Liabilities

Accounts payable and accrued expenses	\$463,756	\$99,846
Grants payable	\$315,850	\$138,051
Restricted organizational funds	\$3,381,595	\$2,877,415
Total liabilities	\$4,161,201	\$3,115,312

Net Assets

Without donor restrictions	\$128,618,682	\$115,803,226
With donor restrictions	\$2,489,588	\$2,284,166
Total net assets	\$131,108,270	\$118,087,392
Total liabilities and net assets	\$135,269,471	\$121,202,704





PUBLIC SUPPORT, REVENUE, AND GAINS

	2021	2020
Contributions	\$7,198,919	\$8,964,147
Investment return, net	\$16,348,099	\$10,421,733
Miscellaneous	\$122,879	\$133,313
Total public support, revenue, and gains	\$23,669,897	\$19,519,193

EXPENSES

Program services:

Developing our talent	\$2,027,114	\$2,379,025
Enriching our community	\$2,054,395	\$1,868,203
Caring for our people	\$4,378,879	\$3,348,631
Building our livelihood	\$1,076,892	\$742,029

Support services:

Management and general	\$786,907	\$801,952
Fundraising	\$324,832	\$329,681
Total expenses	\$10,649,019	\$9,469,521

Change in net assets	\$13,020,878	\$10,049,672
Net assets at beginning of year	\$118,087,392	\$108,037,720
Net assets at end of year	\$131,108,270	\$118,087,392

OUR STAFF



Sharon Mortensen
President & CEO

Kyle Fahrner
Chief Financial Officer

Emily Schafer
Director of Development



Alysia Christy
Director of Community Impact

Heather Crowl
Scholarship Coordinator & Impact Assistant

Laura Dittenber
Administrative & Development Assistant



Emily Hockemeyer
Post-Secondary Education Leader

Kevin LaDuke
Communications Officer

Nicole Morreale
Executive Assistant



Luiz Quellis
Finance Manager

Sarah JacobsCarter
Youth Impact Coordinator



OUR TRUSTEES

Dave Marsh
Board Chair



Katie Horning
Vice Chair



Michael Rogers
Secretary

Jeff Hert
Treasurer



Rod Coleman
Trustee

William Garchow
Trustee

Jon Lynch
Trustee



Lou Mencia
Trustee

Carol Miller
Trustee

Jim Nigro
Trustee



Geraldine Reado
Trustee

Kay Wagner
Trustee

Mike Weideman
Trustee



Jennifer Wendt
Trustee





Midland Area Community Foundation

For Good. For Ever. For All.

76 Ashman Circle | Midland, MI 48640 | 989.839.9661

www.midlandfoundation.org