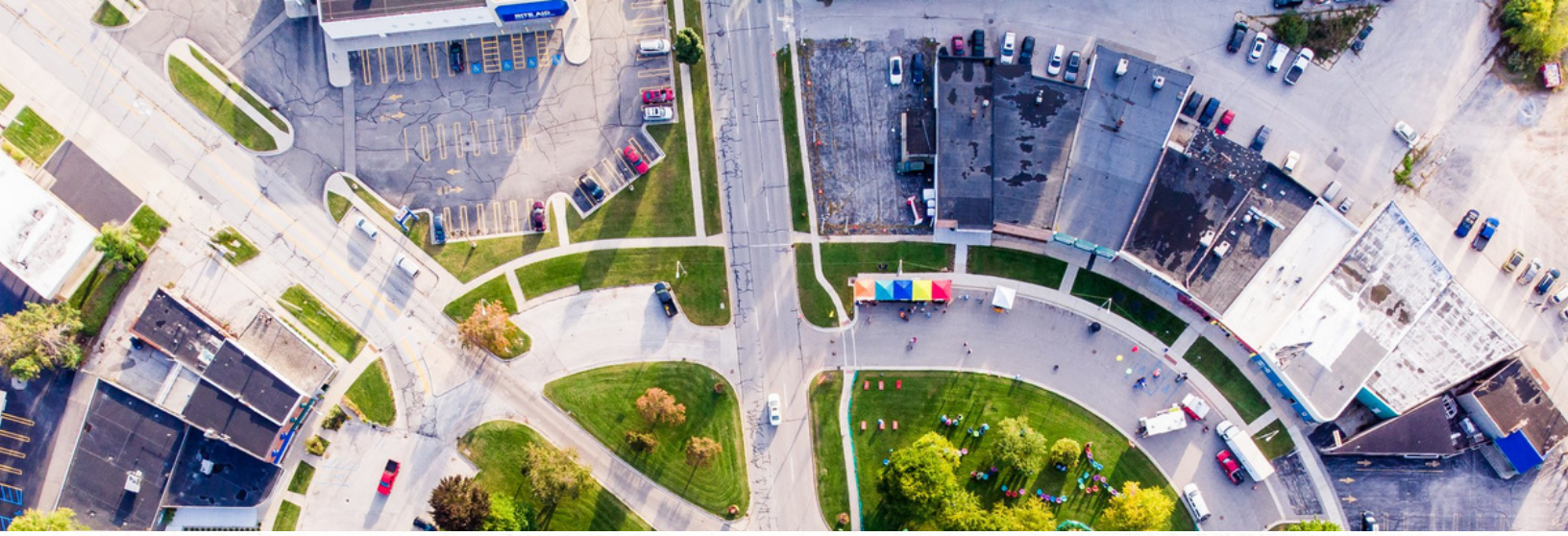




GUIDING PRINCIPLES TO GRANTMAKING





CONTENTS

- **PURPOSE, FOCUS, PRIORITIES**
- **TRUST-BASED GIVING**
- **GRANT GUIDELINES**
- **HOW TO SUBMIT**
- **CHECKLIST**



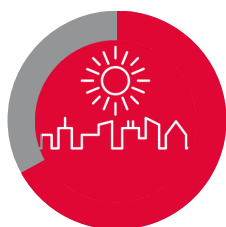
The Midland Area Community Foundation is one spoke in a much bigger wheel, and we intentionally align our practices with the priorities and vision of the community of Midland County. Our work, without alignment with the broader community, will not have the impact that we are striving for.

COMMUNITY

Our Community's Vision Statement:
Midland: An Inclusive Community.
Together. Forward. Bold.
An Exceptional Place Where Everyone Thrives.

The Foundation is concerned about the community as a whole. In alignment to Midland County's Four Focus Areas, we consider grants that support programs and projects that align with one of the Four Focus Areas.

Our community believes that in order to work towards a more vibrant, thriving community, our efforts should be focused on these four broad areas:



BUILDING OUR LIVELIHOOD

(Economic development, infrastructure)



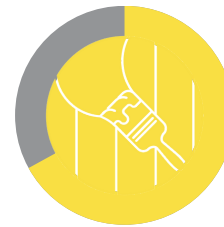
CARING FOR OUR PEOPLE

(Human services, social services, poverty, housing, mental and physical health, public safety)



DEVELOPING OUR TALENT

(Talent, education, youth development and engagement)



ENRICHING OUR COMMUNITY

(Arts, culture, entertainment, recreation, diversity, community leadership, environment)

The Midland Area Community Foundation's Purpose Statement: We exist to cultivate the power of giving within our community, support long-term transformation, and help ensure all residents thrive.

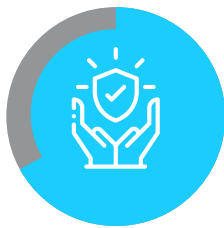
FOUNDATION

Undergirding the Foundation's purpose are these four values:



RESPECT

We actively value, honor, and affirm the human dignity of all people in our community.



INTEGRITY

We seek alignment between what we believe and what we do—both as individuals and as a foundation.



COMPASSION

We show our care and concern for our community through responsive, thoughtful, and strategic action.



EQUITY

We strive to support practices, attitudes, and messages that create opportunities for marginalized residents within our community.

Statement of Commitment: As a community foundation, we commit to prioritizing support to organizations that are working to remove barriers and ensure everyone across Midland County has access to resources. Specific priority will be given to organizations that provide services accessible to all, with a specific focus on increasing access to populations who have been traditionally underresourced or marginalized.

Our Grantmaking Priorities:

The Community Foundation prioritizes grant requests that are committed to increasing the equity of their program/project within the community system.



Our Diversity, Equity, & Inclusion Commitment:

We seek grantees and community partners who share our commitment to diversity, equity, and inclusion. We will ensure that our grantmaking processes are inclusive and will work to eliminate bias, as well as advance equity across the programs that touch our community members.

Increasing equity?

Increasing equity is defined by an organization reducing barriers to service delivery and increasing access to the specific population(s) you impact.



OUR TRUST-BASED GRANTMAKING JOURNEY

The Midland Area Community Foundation is committed to the practices of trust-based philanthropy. We believe it is our responsibility to make the grantmaking process as approachable and as understandable as possible. It's our commitment to address the inherent power imbalances between foundations and nonprofits.



At its core, trust-based philanthropy is about redistributing power for a healthier and more equitable community. In regards to grantmaking, this includes operational funding, streamlined applications and reporting, and a commitment to building relationships based on transparency, dialogue, and mutual learning.

Core to this work are six key principles that put trust-based values into action:

TRUST-BASED GIVING

Trust-based principles have been developed by
the Trust-Based Philanthropy Project
TRUSTBASEDPHILANTHROPY.ORG



Give Multi-Year*, Unrestricted Funding

- *Expanding multi-year funding opportunities*

*Midland Area Community Foundation will not offer multi-year grant funds at this time



Do the Homework

- *Committing to more proactive engagement with partners*
- *Eliminating “hoops” partners needed to jump through*
- *Researching and sharing best practices in collaboration with other philanthropic organizations*



Simplify & Streamline Paperwork

- *Simplifying our application to one Grant Request form with clear questions*
- *Shifting final reporting paperwork to an informal reflection conversation*



Be Transparent & Responsive

- *Becoming more clear about what we do and don't fund*
- *Communicating about changes in our processes through multiple channels*
- *Responding to partner challenges that surface through grant reflections and feedback*
- *Responding with urgency to crises that are emerging*



Solicit & Act on Feedback

- *Using feedback to inform our grantmaking and other engagement*
- *Adding more checkpoints for receiving feedback to our grantmaking and reflection processes*



Offer Support Beyond the Check

- *Offering non-monetary support through equity series, workshops and trainings*
- *Asking our partners about other opportunities to support them during grant reflections*
- *Leaning into opportunities for policy and advocacy work*

GUIDELINES



- Applicants must be 501c3 nonprofit organizations, educational institutions, or governmental entities
- Applicants must directly serve residents in Midland County



- The Community Foundation holds four grant cycles per year.
- The Community Investment Grants application deadlines are January 15, April 15, July 15, & October 15. Grant requests will be considered up to \$60,000 per request.
- Foundation Directed Grants (Field of Interest Funds) application deadlines are January 15 & July 15. Grant request amounts will vary based on the specific field of interest fund that a request aligns with
- Youth Action Council Grants application deadlines are January 15, April 15, & October 15. Grant requests will be considered up to \$10,000.

Foundation Directed funds are Field of Interest funds that have been established for a specific charitable purpose. The grants made through the Foundation Directed grants process specifically align to the purpose(s) of the various Field of Interest grant funds.

Community Investment funds are responsive funds, and are utilized based on the requests/needs of the community. Community Investment funds are to be used to further the purpose of the Midland Area Community Foundation: to support charitable, cultural, educational, recreational, and scientific needs of the Midland area.

Additional grant opportunities are listed on our website.

midlandfdn.org/apply



Youth Action Council grants are made through the Kellogg Youth Fund. Grants considered by the Youth Action Council must have a focus on improving the lives of young people in Midland County.

The Foundation is concerned about the community as a whole. In alignment with Midland County's Four Focus Areas, we consider grants that support programs and projects that align to one of the Four Focus Areas:



Building our Livelihood

Midland County creates and sustains competitive advantages for existing and future businesses. We are well-connected and invest in our physical and technological infrastructure.



Developing our Talent

Midland County offers high-quality education and learning opportunities throughout life. Our community nurtures a skilled workforce and places high value on post-secondary learning. We provide opportunities for children and youth to realize their hopes and dreams.



Enriching our Community

Midland County is a vibrant hub of arts, culture, entertainment, and recreational opportunities. We are committed to equality and inclusion, and we welcome, embrace, and accept all people. We are a sustainable community that values and protects its natural resources.



Caring for our People

The Midland community provides a coordinated and comprehensive system of supportive health and human services so that all may thrive. We encourage self-sufficiency and accept all individual responsibilities to collaborate to create the safest community in the country.

Grant requests must show a commitment to increasing equity of their program/project within the community.

- *Increasing equity is defined by an organization reducing barriers to service delivery and increasing access to the specific population(s) you impact.*



The Community Foundation can consider the following types of requests:

Organizational programming and capacity-building projects

Grant monies may also be used to pay for wages and administrative expenses relevant to the program or project

Capital campaigns

Operational support

The Community Foundation cannot consider the following types of requests:

Basic governmental services

Basic educational functions

Annual fundraising, events, sponsorships

Endowment campaigns

Previously incurred debt

Sectarian religious programs (the exception is if the program or project is community based)

Political or lobbying activities

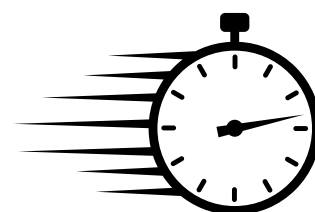
Previously denied Community Foundation grant requests

Multi-year funding



Applications are due by 11:59pm on the date of the grant deadline. The applications should be submitted through the online grant portal, GOApply.

All applicants will be notified of grant outcomes within six weeks of each application deadline.



Contact Us!

HOW TO SUBMIT

Prior to beginning an application – please contact our Director of Community Impact. We want to learn more about your potential request and share additional information and guidance about our Community Foundation grant processes.

Director of Community Impact
Alysia Christy
achristy@midlandfdn.org
989.839.9661

The Community Foundation utilizes an online grant application portal, GOApply.

Nonprofit organizations can register or login at
<https://goapply2.akoyago.com/midland>.

Once logged in to GOApply, a passcode is required to begin the application. The Community Foundation staff will provide the passcode to organizations during our preliminary conversation about your potential request.

Once logged in (and the passcode is entered), you can edit, upload, and save partial applications. Answer all questions completely. Be clear and concise in your responses.

What will your grant application include?

CHECKLIST

Basic organizational information

Specific request information:

- **Title of request**
- **Focus area alignment**
- **Request amount**
- **Project summary**
- **Narrative information**
 - What is the purpose of your request and how does it support the mission and vision of your organization?
 - If known, describe how your request is different from what other organizations may be doing in the Midland County.
 - Please include data that supports the need for your request.
 - Describe how your organization supports (or plans to support) equitable access to marginalized populations with this request.
 - Specify the activities to be undertaken and the timeline for their implementation.
 - Will this request become (or support) an ongoing program? Yes / No
 - If yes, please indicate how the program will be sustained after the Community Foundation's initial funding is spent.
 - If applicable, list any partnerships and/or collaborations for this request.
 - What are the expected outcomes of your project/program and how will you measure the success of the project upon its completion? Please include three measurable goals.

Organizational Background

- Briefly describe the purpose and history of your organization.
- Provide organization website.
- Describe community or constituency you serve.
- Is your organization part of, or affiliated with, a larger regional, state, or national organization? If so, please explain.
- Describe how your organization benefits the community at large.
- Who are the key staff members or volunteers involved with the request? What are their roles within the request?

Budget Information

- Please upload the completed PROJECT BUDGET TEMPLATE. The template should list all of the confirmed and pending sources of income and detailed expenses. The file should be titled "Project Budget". The expenses should equal the revenues in the Project Budget.
- Describe how the Community Foundation grant money would be used.
- Indicate if any portion of the grant will be sent to a national or other affiliate group.

Additional Attachments

- Governance board
- Operating budget
- Year-to-date financial statement
- Organization's non-discrimination policy
- Letters of support
- IRS Form 990
- Audited financials (if not available, include balance sheet)
- Other